

Production Tech and Advance Information

V.6

UPDATED: 06/13/2023



925 3rd Ave. N
Nashville, TN 37201

Contact Info:

Talent Buyer:

Colin Keegan

770.377.9626

Colin@brooklynbowl.com

Production Manager:

Carl Gatti

281.455.2097

gatti@brooklynbowl.com

Index

Mailing Address / Directions / Parking	pg. 3
Load-In / Production Notes	pg. 4
Audio / Mics	pg. 5 - 6
Lighting	pg. 7
House Video World	pg. 8
House Backline	pg. 9
Venue & Facilities	pg. 10
Hospo / Catering	pg. 11
Merch / Security / Settlement	pg. 12
Covid Policy / Recording Policy	pg. 13
Contacts	pg. 14
Lighting Patch List / Lighting Plot	pg. 15 - 18

Take the virtual tour via our website!

<https://www.selfwalk.com/brooklyn-bowl-nashville>

Mailing Address:

To be advanced via Production Manager - Carl Gatti gatti@brooklynbowl.com.

*****Please Do Not Mail Anything to the Venue without Notifying PM*****

Directions:

The venue is located directly adjacent to First Horizon Park on the east side of the stadium at Junior Gilliam Way (Jackson St.) and 3rd Ave N.

From I-24: North or Southbound, take exit 47 to Jefferson Street, westbound. Follow Jefferson Street to 4th Avenue Southbound (left) to Junior Gilliam Way (Jackson St.) (left).

From I-65: North or South bound, Take Exit 85 and follow ALT 41 / Rosa Parks BLVD south to Jefferson Street, eastbound (left). Follow Jefferson Street to 5th Avenue Southbound (right) to Junior Gilliam Way (Jackson St.) (left).

From I-40: West bound, take I-24 north. Eastbound, take I-65 North

Parking:

To be advanced via Production Manager - Carl Gatti gatti@brooklynbowl.com.

**NO PARKING ONSITE BETWEEN THE HOURS OF 2AM - 10AM.
All buses / trucks / vans / sprinters / trailers must depart by 2AM.
NO EXCEPTIONS.**

Load-In:

Ground level rollup door (10.25' H x 10' W) located on the northwest corner of Junior Gilliam Way (Sometimes Jackson St. via Google Maps). 40' Push from Garage Door entrance up ramp to stage left deck. Stage left ramp ceiling clearance of 8ft.



On deck, we have 18' of clearance but loading on stage left we're limited on trim coming up the ramp. Need to double check and confirm the dimensions of everything you're bringing. Please let us know ASAP if you have anything that can't consolidate down to 8' tall and 40" wide.

HOUSE NOTES:

- House hazer only unless otherwise advanced. See Lighting Specs on pg. 7.
- We have a 34' upstage truss to fly backdrops or signs. Trim is about 19' from deck to bottom of stage truss.
- House reserves the right to choose house music that fits the vibe of the venue / restaurant / lanes. If the tour has a pre-show playlist, it must be advanced and is usually played x1 hour prior to performance.
- This is a bowling facility. Doors open to the public for the restaurant and bowling lanes at 5pm daily. Closed sound checks should be completed prior to opening.
- Any and all outside video capture, even for promo use, is subject to an origination fee and must advance permission with the production manager prior to load-in. Venue reserves the right to deny any video capture onsite if this is not advanced ahead of time.

AUDIO

FOH - Venue Avid S6L-24c-112 System (Stage Rack 1)

Firmware 7.0.0

48 Analog In

8 Analog/8 AES Out @ FOH

8 Analog/8 AES Out @ Stage

****Please advance any specific plugin needs outside of stock****

48 Channel Analog split with open 3rd leg for guest use

MONITORS - Venue Avid S6L-24c-112 (Stage Rack 2)

Firmware 7.0.0

48 Analog In

16 Analog Out

16 AES Out

Please advance any specific plugin needs outside of stock

2 Guest Cat5e available to guest mix position and 2 to GA floor

FOH DRIVE SYSTEM

(2) Lab Gruppen Digital Audio Matrix Processor

(2) DnB Audiotechnik DS10 Audio Network Bridge

(2) LAKE LM44 (Console Switching)

MAINS:

(8) d&b V8 (4 per side flown)

(8) d&b V12 (4 per side flown)

(4) d&b VSubs (2 per side flown as part of the Main Left and Right)

(2) d&b B22 Subs (1 per side ground stacked under stage)

(4) d&b Y10p (Front Fill)

(2) d&b Y10p (Mezzanine/VIP Fill)

(4) d&b D80 amplifiers

MONITORS:

(12) d&b M4 2 Way Wedges

(1) d&b V Sub (Drum Sub)

(4) d&b V8 (2 Per Side Sidefills)

(4) d&b VSub (2 Per Side Sidefills)

(7) d&b D20 4ch Power Amplifier

Mic & Cable Package

- (6) SM58
- (6) Beta58
- (2) Beta 91A
- (2) Beta 52
- (8) SM57-LC
- (2) Beta 56A
- (8) Sennheiser E904
- (2) Sennheiser MD421-II
- (2) Audio-Technica AT4041-SP
- (2) Audio-Technica ATM250
- (2) Audio-Technica AT4050
- (6) Radial JDI
- (6) Radial J48
- (6) Radial JDI Stereo
- (4) Radial SB-2
- (1) Radial SB-5
- (50) 25' Mic Cable
- (15) 15' Mic Cable
- (15) 10' Mic Cable
- (12) 6' Instrument Cable
- (16) K&M Tripod Boom Mic Stand
- (10) K&M Short Tripod Boom Mic Stand
- (12) Atlas Straight Mic Stand
- (2) Atlas Heavy Duty Straight Stand
- (4) Atlas Low Profile Mic Stand
- (16) K&M Adjustable Boom Arm Mic Stand

LIGHTING

FIXTURES*

*****Subject to change due to maintenance. Please send update requests to gatti@brooklynbowl.com*****

- (30) Robe Robin Viva CMY LED Profile
- (18) Robe Robin LEDBeam 150
- (12) Robe Spikie
- (20) Chauvet COLORado M Solo
- (6) Chauvet Ovation E-910 FC 36 Degree
- (23) Chauvet Strike P38
- (6) Elation Protron 3K color strobe
- (1) Antari HZ500 Hazer

NO OUTSIDE HAZERS unless otherwise advanced

LIGHTING CONSOLE

Grand MA3 Lite - Software: 3.9.60.28

LIGHTING SYSTEM

Lighting Files Here:

[Brooklyn Bowl Nashville Lighting Files](#)

https://drive.google.com/drive/folders/1b6g2oG4Ma5_XFdHCfWVgill7GuQK-zq_

- Plot
- Patch Sheet
- GrandMA 2 Show File for PSR
- Capture 2022 File
- Capture Presentation File - (.exe file. No need for capture key)

- (2) CAT5e dry lines are available from FOH to USR.
- (2) sACN lines are available USR.
- (8) Universes of 5 Pin DMX available USR via sACN, Can be re-assigned to tour specs.

House sACN IP Ranges - Detailed to avoid IP Conflicts, Network is configured for Multicast sACN.

- Node 1 - 192.168.0.211
- Node 2 - 192.168.0.212
- Node 3 - 192.168.0.213
- Node 4 - 192.168.0.214 (Guest Stage Node)

Patch and Plot

Available at the end of this production pack on pages 15-18.

Additional Notes - The Lighting System is configured to receive sACN as the protocol for control input. Unfortunately, we are not able to re-configure our system to accept Artnet, or 5 Pin Copper DMX Input. We are happy to help configure the tour console for sACN output.

Video Systems & Gear

SWITCHER: Blackmagic Design ATEM Television Studio Pro HD Live Production Switcher (8 Channel SDI/HDMI Switcher)

CAMERAS: Sony BRC-H800 PTZ (x3 mounted House Center, Left, and Right) and Marshall CV503 Mini HD (x3 with mic stand adaptors for static stage shots)

CONTROLLERS: Sony RM-IP10 (x1 at FOH Video World)

RECORD DECKS: X1 Blackmagic Hyperdeck Studio 2 for live director's cut only.

****ISO Recording Decks available per additional cost****

RESOLUME COMPUTER: Dedicated graphics computer at FOH with Resolume available for use / additional cost per advance.

****PLEASE NOTE* - The end of each bowling lane contains a screen and projector (13 total) used for in-house IMAG of every show. We send the IMAG signal to the projector screens and x5 TV monitors around the venue including green rooms. All shows are subject to recording for archival purposes.***

House Backline

****Use of house backline is subject to additional cost, unless otherwise advanced****

DRUMS

Pearl Master Series Maple (Midnight Blue)

Pearl Sensitone Steel Snare

24"x16" Kick Drum

12"x16" Rack Tom

16"x18" Floor Tom

Pearl Double Kick Pedal

Pearl Multi Stands (3)

Pearl Optimount Tom Stand (1)

BASS AMP

Fender Rumble 800 Head

Fender Rumble 4x10" Cab

GUITAR AMPS

Fender ToneMaster Deluxe Reverb

<https://www.fender.com/en-US/guitar-amplifiers/contemporary-digital/tone-master-deluxe-reverb-blonde/2274100982.html>

Fender ToneMaster Twin Reverb

<https://www.fender.com/en-US/guitar-amplifiers/contemporary-digital/tone-master-twin-reverb-blonde/2274200982.html>

Venue and Facilities

Stage Dimensions: 38ft x 21ft @ 48inch deck height performance area

Wing Dimensions: 7ft x 21ft wings stage left and stage right.

Trim Height: 19ft clearance from stage floor to maximum truss trim.

Barricade: Mountain Stage Mojo type aluminum blow-through. 3ft from downstage edge.

Truss Trims:

US Curtain Truss (Backdrops) - 17.5' - Measured from Deck (34' wide with a 6' Valance)

US LX Truss - 17'6" - Measured from stage deck

MS LX Truss - 19'9" - Measured from stage deck

DS Arch Truss - 24'6" - Measured From GA Floor

Circle Truss - 24'6" - Measured from GA Floor

FOH Arch Truss - 24' - Measured from GA Floor

Drape:

25' H x 38' W Upstage - ****Please Note - Our Upstage Drape is **Black Cherry******

23' H x 10' W **Black Cherry** Encore Curtains Stage Left & Stage Right

18' H x 38' Wide Upstage pipe available for backdrops

Guest Power:

200 amp, 3 phase Camlock service stage left for guest audio

400 amp, 3 phase Camlock service stage right for guest lighting / video

******feeder cable must match service******

HOSPITALITY / CATERING

Green Room 1

x1 - private 10ft x 23ft with restrooms and showers

- Dedicated cable box
- Live stream feed of show available upon request
- Lockable door

Green Room 2

x1 - 10ft x 20ft with restrooms and showers

- Dedicated cable box
- Live stream feed of show available upon request
- Lockable door

Tour Production Office

x1 - 6ft x 8.5ft small touring office

- Lockable door

There is Wifi Backstage and throughout the venue. Passwords will be provided upon arrival and will be posted in the Green Room and Touring Production Office.

****Please Note - No Laundry service available onsite. Please advance any Laundry needs with the Production Manager.*

Catering:

Dinner is provided from our signature in-house Blue Ribbon menu via food and drink tickets. For larger touring parties, a dinner buffet may be provided per advance. There is no dining room. Meals are served in the dressing room. ****Please Note - Approved shows will have Green Room Attendant on duty to help run food and drinks per advance.*

Hospitality:

Outside Hospitality / Rider Shop / Runner is per advance and subject to an additional show expense.

Merchandise:

Merchandise is sold in the back of the house right GA floor. We can provide a merch-seller for you at an hourly fee and per advance. X3 8' tables available upon request per advance. Merchandise splits are per artist contract. We are responsible for collecting Tennessee State sales tax of 9.25% on all merchandise sold.

Security:

Blow through aluminum barricade in-house along downstage edge with a 3'- 4' egress for security, production, and approved photo access only. Specific security "needs" should be discussed per advance.

The venue issues a daily pass sheet for house security. Tour credentials may be honored per advance. (Adding house credentials for All Access Artist, All Access Artist Guest, Artist VIP / After-show / Meet & Greet, Working, and Media. **ALL MEET & GREETINGS AND/OR AFTER SHOW HANGS ARE SUBJECT TO AN ADDITIONAL STAFFING FEE.**

A daily house security meeting takes place one hour prior to doors. Tour Representatives are invited to attend or a separate briefing can be scheduled.

Settlement:

All settlement balances shall be paid by company check or wire. Any other requests, including cash, should be made in writing to the house Production Manager at least x5 business days prior to show day.

In-House Media:

Our house photographer is contracted to shoot every show, unless expressly instructed otherwise by an authorized artist representative.

House Lights, Music, and Video are controlled and zoned by an iPad located at FOH. Please coordinate any requests per advance. House reserves the right to a post show “vibe” with our after show “look” and playlist.

COVID TESTING POLICY:

If any member of the Artist or crew is experiencing symptoms of COVID-19 or tests positive for COVID-19, then:

- (1) All remaining members of the Artist and crew must undergo COVID-19 testing and will not be permitted to enter the venue unless they test negative.
- (2) Tests can be administered by a third party testing facility with written results provided to Brooklyn Bowl, or Artist and crew may self test provided that such self-tests are supervised by Brooklyn Bowl staff on site.
- (3) All members of the artist and crew should wear masks while on-site except while onstage or in the green rooms.

Recording / Video Capture / Livestream:

BB Nashville requests permission to record audio and video for archive purposes. Artists shall retain all ownership. **Any outside video recording and/or livestreaming is subject to an origination fee. The House reserves the right to give final approval on any and all camera placement(s).**

ADVANCE CONTACTS

Carl Gatti - Production Manager

gatti@brooklynbowl.com

281.455.2097 m

Keara Amburgey - Production Coordinator / Lead Artist Hospitality

NashArtistHospo@brooklynbowl.com

260.210.5285 m

Kyle O'Connor - Technical Manager

kyle.oconnor@brooklynbowl.com

615.587.1265 m

Max Lenox - Lead House LD

maxmlenox@gmail.com

256.527.8734 m

Rick Poss - Assistant Talent Buyer

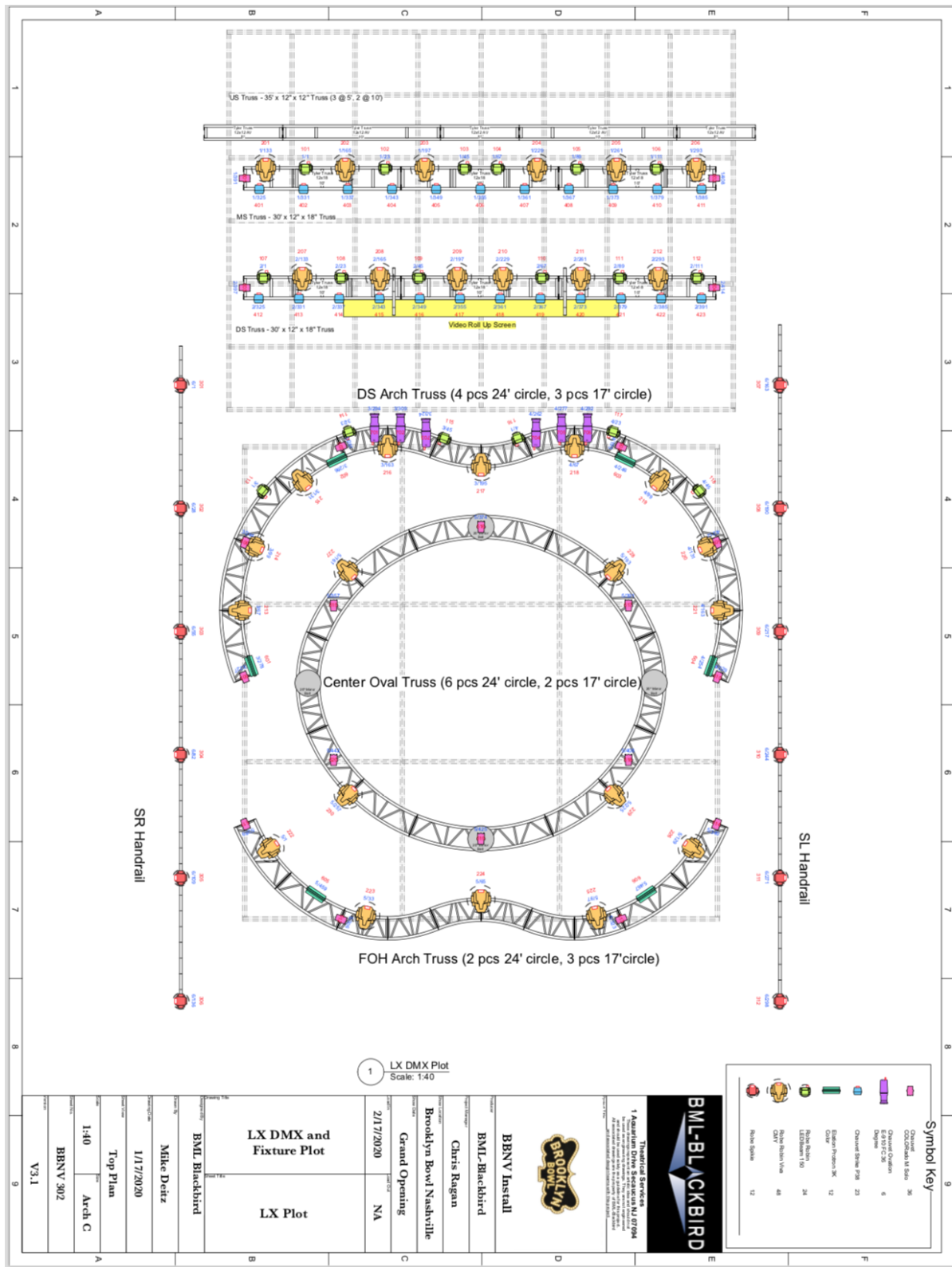
Rick.poss@brooklynbowl.com

706.338.8431 m

Fixture Type	Fixture #	Uni	DMX	Range	Mode	Positon	Color
Robe LED Beam 150	101	1	1	22	Mode 1	MS Truss	BLUE
Robe LED Beam 150	102	1	23	22	Mode 1	MS Truss	BLUE
Robe LED Beam 150	103	1	45	22	Mode 1	MS Truss	BLUE
Robe LED Beam 150	104	1	67	22	Mode 1	MS Truss	BLUE
Robe LED Beam 150	105	1	89	22	Mode 1	MS Truss	BLUE
Robe LED Beam 150	106	1	111	22	Mode 1	MS Truss	BLUE
Robe LED Beam 150	107	2	1	22	Mode 1	DS Truss	PURPLE
Robe LED Beam 150	108	2	23	22	Mode 1	DS Truss	PURPLE
Robe LED Beam 150	109	2	45	22	Mode 1	DS Truss	PURPLE
Robe LED Beam 150	110	2	67	22	Mode 1	DS Truss	PURPLE
Robe LED Beam 150	111	2	89	22	Mode 1	DS Truss	PURPLE
Robe LED Beam 150	112	2	111	22	Mode 1	DS Truss	PURPLE
Robe LED Beam 150	113	3	1	22	Mode 1	DS Arch Truss	RED
Robe LED Beam 150	114	3	23	22	Mode 1	DS Arch Truss	RED
Robe LED Beam 150	115	3	45	22	Mode 1	DS Arch Truss	RED
Robe LED Beam 150	116	4	1	22	Mode 1	DS Arch Truss	RED
Robe LED Beam 150	117	4	23	22	Mode 1	DS Arch Truss	RED
Robe LED Beam 150	118	4	45	22	Mode 1	DS Arch Truss	RED
Robe Viva CMY LED Profile	201	1	133	32	Mode 1	MS Truss	BLUE
Robe Viva CMY LED Profile	202	1	165	32	Mode 1	MS Truss	BLUE
Robe Viva CMY LED Profile	203	1	197	32	Mode 1	MS Truss	BLUE
Robe Viva CMY LED Profile	204	1	229	32	Mode 1	MS Truss	BLUE
Robe Viva CMY LED Profile	205	1	261	32	Mode 1	MS Truss	BLUE
Robe Viva CMY LED Profile	206	1	293	32	Mode 1	MS Truss	BLUE
Robe Viva CMY LED Profile	207	2	133	32	Mode 1	DS Truss	PURPLE
Robe Viva CMY LED Profile	208	2	165	32	Mode 1	DS Truss	PURPLE
Robe Viva CMY LED Profile	209	2	197	32	Mode 1	DS Truss	PURPLE
Robe Viva CMY LED Profile	210	2	229	32	Mode 1	DS Truss	PURPLE
Robe Viva CMY LED Profile	211	2	261	32	Mode 1	DS Truss	PURPLE
Robe Viva CMY LED Profile	212	2	293	32	Mode 1	DS Truss	PURPLE
Robe Viva CMY LED Profile	213	3	67	32	Mode 1	DS Arch Truss	RED
Robe Viva CMY LED Profile	214	3	99	32	Mode 1	DS Arch Truss	RED
Robe Viva CMY LED Profile	215	3	131	32	Mode 1	DS Arch Truss	RED
Robe Viva CMY LED Profile	216	3	163	32	Mode 1	DS Arch Truss	RED
Robe Viva CMY LED Profile	217	3	195	32	Mode 1	DS Arch Truss	RED
Robe Viva CMY LED Profile	218	4	67	32	Mode 1	DS Arch Truss	RED
Robe Viva CMY LED Profile	219	4	99	32	Mode 1	DS Arch Truss	RED
Robe Viva CMY LED Profile	220	4	131	32	Mode 1	DS Arch Truss	RED
Robe Viva CMY LED Profile	221	4	163	32	Mode 1	DS Arch Truss	RED
Robe Viva CMY LED Profile	222	5	1	32	Mode 1	FOH Arch Truss	YELLOW
Robe Viva CMY LED Profile	223	5	33	32	Mode 1	FOH Arch Truss	YELLOW
Robe Viva CMY LED Profile	224	5	65	32	Mode 1	FOH Arch Truss	YELLOW
Robe Viva CMY LED Profile	225	5	97	32	Mode 1	FOH Arch Truss	YELLOW
Robe Viva CMY LED Profile	226	5	129	32	Mode 1	FOH Arch Truss	YELLOW
Robe Viva CMY LED Profile	227	5	161	32	Mode 1	Center Oval	ORANGE
Robe Viva CMY LED Profile	228	5	193	32	Mode 1	Center Oval	ORANGE
Robe Viva CMY LED Profile	229	5	225	32	Mode 1	Center Oval	ORANGE
Robe Viva CMY LED Profile	230	5	257	32	Mode 1	Center Oval	ORANGE
Robe Spikie	301	6	1	27	Mode 1	SR Balc	GREEN
Robe Spikie	302	6	28	27	Mode 1	SR Balc	GREEN
Robe Spikie	303	6	55	27	Mode 1	SR Balc	GREEN
Robe Spikie	304	6	82	27	Mode 1	SR Balc	GREEN
Robe Spikie	305	6	109	27	Mode 1	SR Balc	GREEN

Robe Spikie	306	6	136	27	Mode 1	SR Balc	GREEN
Robe Spikie	307	6	163	27	Mode 1	SL Balc	GREEN
Robe Spikie	308	6	190	27	Mode 1	SL Balc	GREEN
Robe Spikie	309	6	217	27	Mode 1	SL Balc	GREEN
Robe Spikie	310	6	244	27	Mode 1	SL Balc	GREEN
Robe Spikie	311	6	271	27	Mode 1	SL Balc	GREEN
Robe Spikie	312	6	298	27	Mode 1	SL Balc	GREEN
Chauvet Strike P38	401	1	325	6	6 channel	MS Truss	BLUE
Chauvet Strike P38	402	1	331	6	6 channel	MS Truss	BLUE
Chauvet Strike P38	403	1	337	6	6 channel	MS Truss	BLUE
Chauvet Strike P38	404	1	343	6	6 channel	MS Truss	BLUE
Chauvet Strike P38	405	1	349	6	6 channel	MS Truss	BLUE
Chauvet Strike P38	406	1	355	6	6 channel	MS Truss	BLUE
Chauvet Strike P38	407	1	361	6	6 channel	MS Truss	BLUE
Chauvet Strike P38	408	1	367	6	6 channel	MS Truss	BLUE
Chauvet Strike P38	409	1	373	6	6 channel	MS Truss	BLUE
Chauvet Strike P38	410	1	379	6	6 channel	MS Truss	BLUE
Chauvet Strike P38	411	1	385	6	6 channel	MS Truss	BLUE
Chauvet Strike P38	412	2	325	6	6 channel	DS Truss	PURPLE
Chauvet Strike P38	413	2	331	6	6 channel	DS Truss	PURPLE
Chauvet Strike P38	414	2	337	6	6 channel	DS Truss	PURPLE
Chauvet Strike P38	415	2	343	6	6 channel	DS Truss	PURPLE
Chauvet Strike P38	416	2	349	6	6 channel	DS Truss	PURPLE
Chauvet Strike P38	417	2	355	6	6 channel	DS Truss	PURPLE
Chauvet Strike P38	418	2	361	6	6 channel	DS Truss	PURPLE
Chauvet Strike P38	419	2	367	6	6 channel	DS Truss	PURPLE
Chauvet Strike P38	420	2	373	6	6 channel	DS Truss	PURPLE
Chauvet Strike P38	421	2	379	6	6 channel	DS Truss	PURPLE
Chauvet Strike P38	422	2	385	6	6 channel	DS Truss	PURPLE
Chauvet Strike P38	423	2	391	6	6 channel	DS Truss	PURPLE
Chauvet Colorado M Solo	501	1	391	17	STD.Y	MS Truss	BLUE
Chauvet Colorado M Solo	502	1	408	17	STD.Y	MS Truss	BLUE
Chauvet Colorado M Solo	503	2	397	17	STD.Y	DS Truss	PURPLE
Chauvet Colorado M Solo	504	2	414	17	STD.Y	DS Truss	PURPLE
Chauvet Colorado M Solo	505	3	227	17	STD.Y	DS Arch Truss	RED
Chauvet Colorado M Solo	506	3	244	17	STD.Y	DS Arch Truss	RED
Chauvet Colorado M Solo	507	3	261	17	STD.Y	DS Arch Truss	RED
Chauvet Colorado M Solo	508	4	195	17	STD.Y	DS Arch Truss	RED
Chauvet Colorado M Solo	509	4	212	17	STD.Y	DS Arch Truss	RED
Chauvet Colorado M Solo	510	4	229	17	STD.Y	DS Arch Truss	RED
Chauvet Colorado M Solo	511	5	289	17	STD.Y	FOH Arch Truss	YELLOW
Chauvet Colorado M Solo	512	5	306	17	STD.Y	FOH Arch Truss	YELLOW
Chauvet Colorado M Solo	513	5	323	17	STD.Y	FOH Arch Truss	YELLOW
Chauvet Colorado M Solo	514	5	340	17	STD.Y	FOH Arch Truss	YELLOW
Chauvet Colorado M Solo	515	5	357	17	STD.Y	Center Oval	ORANGE
Chauvet Colorado M Solo	516	5	374	17	STD.Y	Center Oval	ORANGE
Chauvet Colorado M Solo	517	5	391	17	STD.Y	Center Oval	ORANGE
Chauvet Colorado M Solo	518	5	408	17	STD.Y	Center Oval	ORANGE
Chauvet Colorado M Solo	519	5	425	17	STD.Y	Center Oval	ORANGE
Chauvet Colorado M Solo	520	5	442	17	STD.Y	Center Oval	ORANGE
Elation Protron 3K Color	601	3	278	8	8 channel	DS Arch Truss	RED
Elation Protron 3K Color	602	3	286	8	8 channel	DS Arch Truss	RED
Elation Protron 3K Color	603	4	246	8	8 channel	DS Arch Truss	RED
Elation Protron 3K Color	604	4	254	8	8 channel	DS Arch Truss	RED

Elation Protron 3K Color	605	5	459	8	8 channel	FOH Arch Truss	YELLOW
Elation Protron 3K Color	606	5	467	8	8 channel	FOH Arch Truss	YELLOW
Chauvet E910 FC 36°	701	3	294	15	15	DS Arch Truss	RED
Chauvet E910 FC 36°	702	3	309	15	15	DS Arch Truss	RED
Chauvet E910 FC 36°	703	3	324	15	15	DS Arch Truss	RED
Chauvet E910 FC 36°	704	4	262	15	15	DS Arch Truss	RED
Chauvet E910 FC 36°	705	4	277	15	15	DS Arch Truss	RED
Chauvet E910 FC 36°	706	4	292	15	15	DS Arch Truss	RED
Antari HZ500 Hazer	901	8	1	1	1 channel	Stage	
ADJ MB DMX II Mirror Ball	8001	5	501	2	2 channel	Center Oval	ORANGE
ADJ MB DMX II Mirror Ball	8002	5	503	2	2 channel	Center Oval	ORANGE
ADJ MB DMX II Mirror Ball	8003	5	505	2	2 channel	Center Oval	ORANGE
ADJ MB DMX II Mirror Ball	8004	5	507	2	2 channel	Center Oval	ORANGE



Brooklyn Bowl Nashville wants you and your team to have an easy and successful show day. Do not hesitate to reach out with any questions. 🤘 700 🔥