

**Production Tech and Advance
Information
November 1, 2019**



61 Wythe Avenue • Brooklyn, NY 11249
(718) 963-3369

Venue And Technical Information

Sound and Lights

CONSOLES:

FOH – DiGiCo SD12 With SD Rack
Monitors - Avid Venue SC48 With FWx Option

PLUG INS (FOH):

- Waves Renaissance Channel
- Waves C6 Multiband Compressor
- Waves Kramer HLS channel
- Waves Super Tap
- Waves Doubler
- Waves NLS channel
- Waves Q10 EQ
- Waves SSL Bundle (Comp, Ch, EQ)
- Waves TransX

PLUG INS (MONs):

- Waves Renaissance Channel
- Waves C6 Multiband Compressor
- Waves Q10 EQ

MAINS:

- (12) d&b Y-series - 6/Side
- (4) d&b V-series Subs - 2/Side FLOWN
- (2) d&b J-Infra Subs - 1/Side UNDER STAGE
- (4) d&B Y-series – 2x VIP Lane Fills & 2s Front Fills

MONITORS:

- (12) JBL - VRX915M Wedges
- (1) JBL - VRX915SP Drum Sub

CONTROL:

Lake LM 44

AMPLIFIERS:

- (3) D80 d&b Amps (Mains & SUBs)
- (1) D20 d&b Amps (Fills and VIP)
- (14) Crown XTi-4000 (MONs)

MICS / DIs: (CONFIRM AT ADVANCE AS NEEDED)

- | | |
|------------------------|----------------------------|
| 2) Audio-Technica 4040 | 2) Shure Beta 57A |
| 2) Audio-Technica 4041 | 4) Shure Beta 58A |
| 1) Sennheiser e902 | 1) Shure Beta 91 |
| 4) Sennheiser e904 | 1) Shure Beta 91A |
| 2) Sennheiser e906 | 2) Shure Beta 98D/S |
| 2) Sennheiser MD421 | 5) BBS AR133 Active DI's |
| 5) Shure SM57 | 6) Radial Passive Pro D1's |
| 10) Shure SM58 | 1) Radial Stereo Pro D2 |
| 1) Shure Beta 52 | 1) Wireless Handheld Mic |
| 1) Shure Beta 56A | (Shure ULXP4 w/ SM58) |

LIGHTING CONTROL:

MA Lighting – GrandMA2 Light

LIGHTING:

(FIXTURE ADDRESS & LIGHTING PLOT ARE AT THE END OF THIS DOCUMENT.)

- | | |
|------------------------------|---------------------------------------|
| 8) Chauvet Colorado1 LED Par | 16) Martin Rush RGBW Par 1 (US Truss) |
| 2) High-End Technobeam Hi | 8) Martin Rush RGBW Par 1 (DS Truss) |
| 8) S4 Ellipsoidal | 2) MAC Aura's |
| 8) Martin Mac 101 | |
| 10) Martin Mac 350 Entour | |

NO HAZE/ATMOSPHERIC EFFECTS

VIDEO:

DIGITAL HD MATRIX SYSTEM:

- 1) Crestron dual-bus matrix control system with 8.4" touch-screen control
- 1) Extron 16x16 Multi-Rate Serial Digital Matrix Switcher
- 1) iMac 3.4GHZ i7 – 8GB Ram
- 1) Mac Mini 2.3GHZ i5 – 4GB Ram
- 1) Belkin Thunderbolt Dock F4U055
- 1) Magic Track Pad A1339
- 1) Presentation Remote SMK Link – VP4910R
- 1) Sound/Video Mixer: Pioneer SVM-1000

PROJECTION/LCD:

- 9) Sharp PG-F320W DLP/WXGA projectors: 3000 ansi lumen 2000/1 contrast : 1280 x 800 native 16:10 resolution : 720p/1080i
- 1) Sharp PG-40W3D projector : 4000 ansi lumen 2200/1 contrast 1280 x 800 native 16:10 resolution
- 8) 9.5' x 6' rear-projection HD Cineflex video surfaces over the pinspotters
- 1) 12' x 9' HD Cineflex video surface in Front of House
- 16) 32" LCD screens in bowler's lounge with custom graphic/text display
- 1) 9.5' x 6' HD pull down video surface centered on stage
- 2) 60" Panasonic Plasma Display
- 1) Samsung LED 60"
- 1) 32" Video Preview Monitor
- 1) Video Live Switcher: Panasonic AV – HS300
- 5) Solid State Drive 480 GB: SDSSDX-480G
- 5) SSD Dock: 1492605 (Hyperdeck Shuttle 2)
- 1) Video Recorder: Ki Pro
- 1) Video Storage: Ki-Stor500-RO
- 1) Camera Control: Sony RM-BR300
- 1) Live Switcher Power Source: IA-200a
- 2) Presentation Switcher/Scaler: Kramer VP-437N w/ VGA/composite/HDMI/Component
- 1) BluRay player
- 1) Video Storage XFER: Ki Stor Dock
- 2) Black Magic Design HD-SDI to HDMI
- 2) Black Magic Design HDMI to HD-SDI
- 1) ATLONA AT-HD570: Audio De-Embedder
- 4) Sony P/T/2 Cams: BRC-2700
- 4) Sony HD-SDI Card: BRBKHSD1 HD-SDI out put card for BRC-2700

CONTENT FOR SCREENS:

If you want to utilize our in house screens for video content during your show, see the guidelines below:

-Resolution: 1280 x 720 (720p)

-Aspect ratio: 16:9

-File format: .mp4 & .mkv (preferred) {.mov is acceptable but not preferred if audio will be used with it}

-BB uses a free media player called VLC for 99% of video assets. We encourage others to test their content with this application before we accept any material.)

Production Equipment List:

BACKLINE:

- 1) Tama Starclassic Six Piece Drum Kit, Indigo Sparkle Burst
 - - 22" Bass Drum
 - - 10"/12"/14"/16" Toms
 - - Snare
 - - (4) Cymbal Stands with Boom, Hi Hat Stand, Snare Stand, Bass Drum Pedal, Throne
 - - **Cymbals not supplied**
- (1) Markbass Little Mark Tube 800 with 4x10 and 1x15 Cabs
- (1) Fender Super Reverb (Silver Face) refurbed by Blackie Pagano
- (1) Fender '65 Reissue Twin Reverb refurbed by Blackie Pagano
- (1) Fender DeVille 410 refurbed by Booya! Amplifiers
- (1) 1959 Hammond C2 Organ with C3 Percussion, Leslie 147, Bench & Bass Pedals (**Limited Availability – per advance ONLY**)
- (2) Single-tier X Keyboard Stands
- (2) Keyboard Bench
- (4) Guitar Stands
- (4) Music Stands

DJ GEAR:

- | | |
|-------------------------|---------------------|
| (2) Technics SL1200Mk2 | (1) Pioneer DJM-900 |
| (2) Pioneer CDJ2000NXS2 | (1) Pioneer DJM-800 |
| (2) Technics SL1210Mk5 | (1) Rane TT57SL |
| (2) Pioneer DVJ-1000s | (2) Rane Serato SL3 |

POWER:

- (1) 200 AMP 3-phase service with female camlock tie-ins located underneath stage right (shared with house lighting dimmers)
- (1) 100 AMP 3-phase service with bare wire tie-ins located behind stage left

Brooklyn Bowl NY Media Archive Policy and Options

HD VIDEO / AUDIO (*must be advanced*):^[L]_[SEP]

Option 1: (\$250) - Our Video Director will live mix the feeds to one source. We have 4 robotic cameras & the files are huge, about 1 gig per minute. Audio is provided by a stereo SBD feed. You'll need to bring an external hard drive with plenty of free space to walk with the files post show. We can deduct the cost from settlement or make other financial arrangements if that's something you're interested in pursuing.

Option 2: (\$1000) - All 4 cameras to individual sources in full HD. Records all the raw footage from each camera to edit as you please. You would end up with about 5 gigs of footage per minute in full HD. (1 gig per camera, plus the directors cut, per file.) We can deduct the cost from settlement or make other financial arrangements if that's something you're interested in pursuing.

AUDIO ONLY:

2 track Analogue or Digital, Band's recorder – (Free)

2 track Analogue or Digital, House recorder – (\$30)

Digital Multi Track with Band's DAW – (\$50)

Digital Multi Track with house engineer's DAW – (\$100) – (Confirm Availability)

Multi Track recording at FOH via Avid HDx or FWx 400/800, & we can also adapt FWx to Thunderbolt. If HDx, you will need your own DigiLink cables. FWx is also available at Monitors.

Requests for additional audio or video interfacing options not listed above can be discussed for external media outlets/ promo opportunities on a case-by-case basis.

These files are for promo use only - & not to be sold. Any use for financial gain must include approval from Brooklyn Bowl, LLC.

Logistics:

HOSPITALITY / DRESSING ROOM / MISC, VENUE:

-Standard Hosp: 2 drink tix per person / 1 meal ticket per person for all acts on the bill. **Please remember to tip on meal & drink tickets.**

-All band meals are provided in house off of our full Blue Ribbon Restaurant menu. Service begins at 6PM on Monday – Friday & at 11AM on Saturday & Sunday.

-Note: Meal tickets are good for 2 appetizers OR 1 entree. Can be used anytime while kitchen is open (until ~11:00AM Sun – Wed // ~2:00AM Thur - Sat).

-Our dressing room is located one flight up from stage left. It is strictly **NO SMOKING** (as is our entire venue). – We have a sensitive alarm tied into stage power & setting it off will shut down the show.

-Because we are a green venue and do not serve bottled water, there will always be pitchers of water & corn cups in the green room and the side of the stage. (Bottled water for stage use IS available upon request)

-Please note we have one green room & as such, it is shared space between all bands on the bill. On Thursday, Friday & Saturday, we have late shows. Almost every night we have one or two support acts. As the headliner, you will be sharing the dressing room with these bands. If you need any restrictions - be it escort, access, or just 20 mins after the show to catch your breath, please let me know in advance, so I can set it up with our security staff. Most times the transitions between bands & shows run seamlessly, but I want to make sure everyone is comfortable with the dressing room situation, as there is only one of them & space is limited.

-We have one shower available in our upstairs dressing room bathroom. Please let me know if you need towels for this and/or the stage.

-Wireless network is ArtistBB & *Brooklyn!* is the password.

LOCATION / PARKING:

-Brooklyn Bowl is located at 61 Wythe Avenue, Brooklyn, NY 11249

[https://www.google.com/maps/place/61+Wythe+Ave,+Brooklyn,+NY+11249/@40.7218816,-](https://www.google.com/maps/place/61+Wythe+Ave,+Brooklyn,+NY+11249/@40.7218816,-73.9573949,15z/data=!4m2!3m1!1s0x89c25942cd74d405:0x4b65067c6bdad276?sa=X&ei=WKJGVJF65-OwBOS0ggAM&ved=0CIBEBEPIBMAo)

[73.9573949,15z/data=!4m2!3m1!1s0x89c25942cd74d405:0x4b65067c6bdad276?sa=X&ei=WKJGVJF65-OwBOS0ggAM&ved=0CIBEBEPIBMAo](https://www.google.com/maps/place/61+Wythe+Ave,+Brooklyn,+NY+11249/@40.7218816,-73.9573949,15z/data=!4m2!3m1!1s0x89c25942cd74d405:0x4b65067c6bdad276?sa=X&ei=WKJGVJF65-OwBOS0ggAM&ved=0CIBEBEPIBMAo)

-All parking at Brooklyn Bowl is street parking. Please note applicable signage including night “No Parking” regulations & “Loading Zones”. Brooklyn Bowl is NOT responsible for parking tickets.

-We have 2 shore power hook ups available, located next to the stage door closest to N12th St, On Wythe Avenue.

-We do not provide runners for bus driver transportation but car services are available: Northside: [718.387.2222](tel:718.387.2222). // Uber // Lyft.

HOTELS:

[The Hoxton](#) - Dan Kirkey (daniel.kirkey@thehox.com). Best discount, right around the corner. Located on 9th and Wythe

[The William Vale](#) - Deanna Thomas (deanna@thewilliamvale.com). Newer hotel, very tall and fancy. Great views of Brooklyn/NYC

[Wythe Hotel](#) - Annie De Mayo (annie@wythehotel.com). Original Brooklyn hotel on the block, very nice. Directly across the street from the venue

[Williamsburg](#) - Senka Tomic senka@thewilliamsburghotel.com

[Airbnb 1](#) - wayan@brooklynbowl.com - 10% discount for BB artists

[Airbnb 2](#) - wayan@brooklynbowl.com - 10% discount for BB artists

MERCHANDISE:

-We provide a well lit merchandise booth shared with all artists on the bill in a high traffic area of the venue. Our merch split is 80/20 across, until the show covers at the box office. Once the show covers, rate goes to 100% to the bands.

-Do you have a seller? If you need one, please call to discuss. Normally I can find someone to sell for \$100 per night.

-Please note: Our merch booth & box office share the same space. We need to keep that area secure for both parties, so please don't plan on congregating with friends, etc in the merch area.

-One final merch note: It is ok to sell stickers, but not give them away.

PASSES, SECURITY & RECORDING POLICY:

- Brooklyn Bowl will honor touring passes and can supply house passes upon request with escort privileges determined on a per show basis
- Brooklyn Bowl must uphold to the New York Liquor laws and ID every individual who comes in and out of the venue. Please note that 99% of shows at Brooklyn Bowl are 21+.
- We do not provide a barricade or risers, if required & you need to rent it, please contact me directly.
- We allow non-professional Photo, Audio & Video recording. Please let us know if you require any limitations on that policy for your show. Brooklyn Bowl has an open taping policy for bands that permit. Tapers must check in upon arrival and can only be accommodated in certain locations throughout the venue. Please note, no extra in-house Security is provided for these areas. NO Video or Still Photo Tripods/ Monopods are permitted on the concert floor or onstage without prior approval. GO-PRO style cameras can be mounted onstage.
- Please let us know in advance about any professional Audio or Video recording associated with your show. All recording must be approved in advance and is subject to a site/location fee, calculated at \$50/item, items including operators, cameras, tripods, and other related crew and equipment.
- Please note our in-house video projection capabilities.
- We have the capability to make a HD video recording of your show for archival use for you. Please see above for further information.

SETTLEMENT:

- Payment: Normally we pay in cash after the show. Check or wire are also fine options. Please advance your preferred method.
- You will settle with one of the managers on duty or myself.
- We need a W9 to be filled out at settlement or you are welcome to email it to me in advance.

Thanks for reading. We look forward to a successful show!

WAYAN ZOEY

Production Manager 📧 **BROOKLYN BOWL WILLIAMSBURG**

61 Wythe Ave, Brooklyn, NY 11249

C: 646.624.2735 E: wayan@brooklynbowl.com

Rock. And Roll. | brooklynbowl.com

(FIXTURE ADDRESSES & LIGHTING PLOT BELOW.)

Fixture # / Name / Fixture Type Fixture Address

1 Disco Ball Motor Dimmer 1.497

2 Open Dimmer 1.498

3 Leko 1 Dimmer 1.499

4 Leko 2 Dimmer 1.500

5 Leko 3 Dimmer 1.501

6 Leko 4 Dimmer 1.502

7 Festoon 1 1.503

8 Festoon 2 1.504

9 Leko 5 Dimmer 1.505

10 Leko 6 Dimmer 1.506

11 Leko 7 Dimmer 1.507

12 Leko 8 Dimmer 1.508

13 Leko Wall. 1.509

14 Festoon 3 1.510

15 Festoon 4 1.511

16 Open Dimmer 1.512

701 Mac 101 1 Martin Mac 101 RAW 1.1

702 Mac 101 2 Martin Mac 101 1.13

703 Mac 101 3 Martin Mac 101 XXX

704 Mac 101 4 Martin Mac 101 1.37

705 Mac 101 5 Martin Mac 101 1.49

706 Mac 101 6 Martin Mac 101 XXX

707 Mac 101 7 Martin Mac 101 1.73

708 Mac 101 8 Martin Mac 101 1.85

101 ROBE VIVA MODE 1 1.265

102 ROBE VIVA 1.297

103 ROBE VIVA 1.329

104 ROBE VIVA 1.361

105 ROBE VIVA 1.393

106 ROBE VIVA 1.425

401 Martin Rush Front LED Par 1.097

402 Martin Rush Front LED Par 1.104

403 Martin Rush Front LED Par 1.111

404 Martin Rush Front LED Par 1.118

405 Martin Rush Front LED Par 1.125

406 Martin Rush Front LED Par 1.132

407 Martin Rush Front LED Par 1.139

408 Martin Rush Front LED Par 1.146 (cont'd)

Fixture # / Name / Fixture Type Fixture Address

301 Rush Par 1 Martin Rush Par 1.153
302 Rush Par 2 Martin Rush Par 1.160
303 Rush Par 3 Martin Rush Par 1.167
304 Rush Par 4 Martin Rush Par 1.174
305 Rush Par 5 Martin Rush Par 1.181
306 Rush Par 6 Martin Rush Par 1.188
307 Rush Par 7 Martin Rush Par 1.195
308 Rush Par 8 Martin Rush Par 1.202
309 Rush Par 9 Martin Rush Par 1.209
310 Rush Par 10 Martin Rush Par 1.216
311 Rush Par 11 Martin Rush Par 1.223
312 Rush Par 12 Martin Rush Par 1.230
313 Rush Par 13 Martin Rush Par 1.237
314 Rush Par 14 Martin Rush Par 1.244
315 Rush Par 15 Martin Rush Par 1.251
316 Rush Par 16 Martin Rush Par 1.258

901 Colorado 1 2.1
902 Colorado 2 2.10
903 Colorado 3 2.19
904 Colorado 4 2.28
905 Colorado 5 2.37
906 Colorado 6 2.46
907 Colorado 7 2.55
908 Colorado 8 2.64

601 Chauvet Mini Wash 2.145
602 Chauvet Mini Wash 2.158
603 Chauvet Mini Wash 2.171
604 Chauvet Mini Wash 2.184

801 Martin Aura (Extended Mode 25ch) 2.201
802 Martin Aura (Extended Mode 25ch) 2.226
107 Mac350 7 Martin Mac 350 Entour 2.335
108 Mac350 8 Martin Mac 350 Entour 2.352
109 Mac350 9 Martin Mac 350 Entour 2.301
110 Mac350 10 Martin Mac 350 Entour 2.318

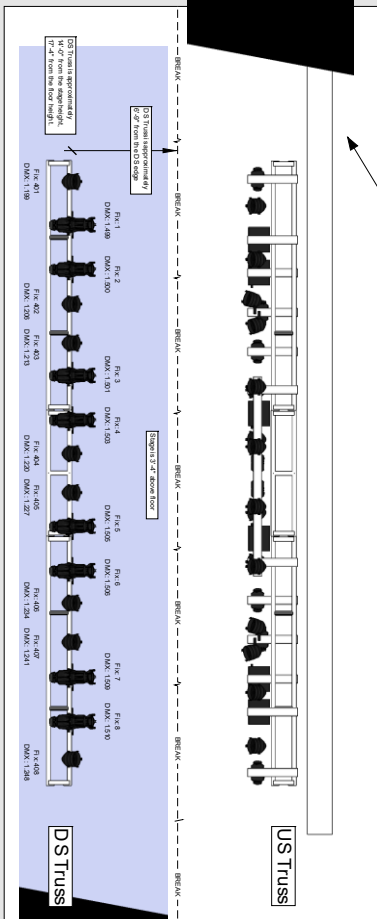
Plan

Scale 1/2" = 1'0"

NOTE:
Brooklyn Bowl does not allow the use of haze or atmospheric effects.

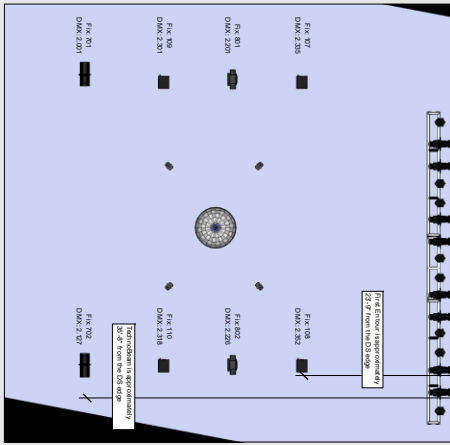
NOTE:
This is a general layout for lighting. Specific fixture placement and beam angles will be determined by the lighting designer in consultation with the architect and the client.

NOTE:
The use of color and intensity of light is subject to change. The lighting designer will provide a detailed lighting design and fixture schedule. The lighting designer will also provide a lighting layout for the stage and bar area.



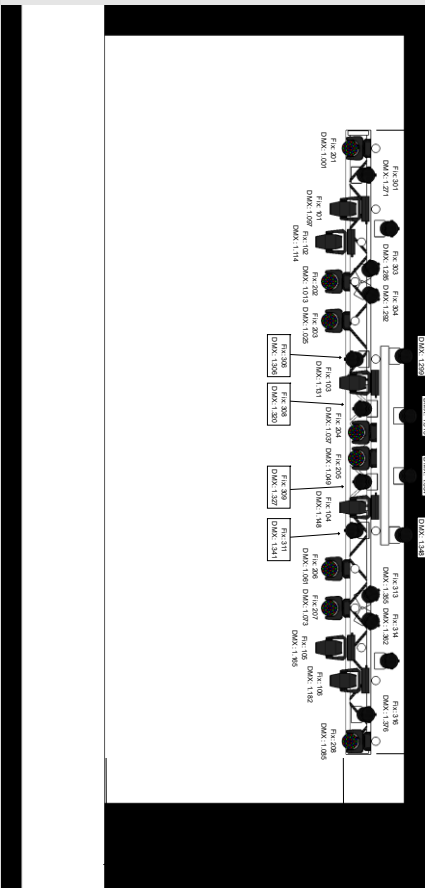
Plan - Dancefloor

Scale 1/4" = 1'0"



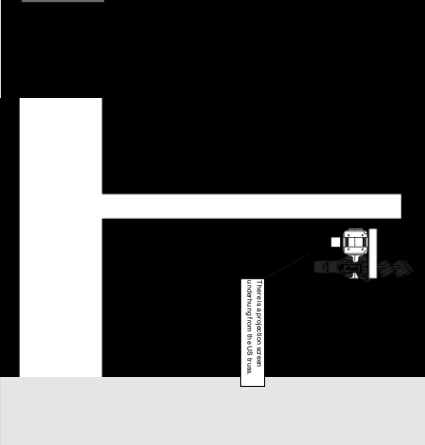
Section

Scale 1/2" = 1'0"



Section

Scale 1/2" = 1'0"



Brooklyn Bowl New York

November 2nd, 2014 Version 006

Ed. Quastler, Event Contact:
Peter Casella
Production Manager
Casella@brooklynbowl.com
Vince Corradi
Lighting Director
VCorradi@brooklynbowl.com
Drawn by: Sam Johnson

Legend

Fixture	Count	ID Series
Marin 300 Envor	10	Fx-100's
Marin Max101	8	Fx-200's
Marin Flush PAR (US Truss)	16	Fx-300's
COLOTruss 1 (US Truss)	8	Fx-400's
Reinodram	2	Fx-700's
Mar Aura	2	Fx-800's
ETC Leko	8	Fx-0's

LIGHTING

Plate 1 of 1