

Production Tech and Advance Information

UPDATED: 9.4.25



925 3rd Ave. N
Nashville, TN 37201

Contact Info:

Production Manager

Jeri Gennaro

917.748.6194

jeri.gennaro@brooklynbowl.com

Production Coordinator

Korey Sugita

562.310.0960

Korey.sugita@brooklynbowl.com

Index

Mailing Address / Directions / Parking	pg. 3
Load-In + Hotel Discounts	pg. 4
Audio	pg. 5
Lighting	pg. 6
Video	pg. 7
Venue & Facilities	pg. 8
Dressing Rooms + House Details	pgs. 9 - 11
House Backline	pg. 12
Contacts	pg. 13
Lighting Patch List / Lighting Plot	pgs. 14 - 23

Take the virtual tour via our website!

<https://www.selfwalk.com/brooklyn-bowl-nashville>

Mailing Address:

To be advanced via Production Manager - Jeri Gennaro

*****Please Do Not Mail Anything to the Venue without notifying PM*****

Directions:

The venue is located directly adjacent to First Horizon Park on the east side of the stadium at Junior Gilliam Way (Jackson St.) and 3rd Ave N.

From I-24: North or Southbound, take exit 47 to Jefferson Street, westbound. Follow Jefferson Street to 4th Avenue Southbound (left) to Junior Gilliam Way (Jackson St.) (left).

From I-65: North or South bound, Take Exit 85 and follow ALT 41 / Rosa Parks BLVD south to Jefferson Street, eastbound (left). Follow Jefferson Street to 5th Avenue Southbound (right) to Junior Gilliam Way (Jackson St.) (left).

From I-40: West bound, take I-24 north. Eastbound, take I-65 North

Parking:

To be advanced via Production Manager jeri.gennaro@brooklynbowl.com.

Parking maps will be sent during advance as they will be show specific.

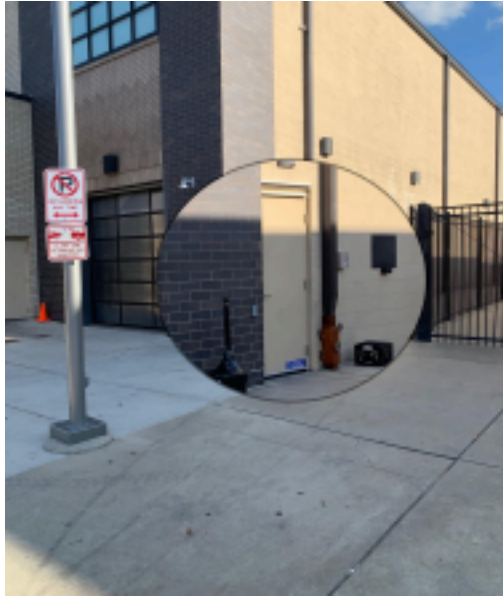
***Brooklyn Bowl Can NOT provide parking for personal vehicles.
We are surrounded by available street parking and pay lots.***

**NO PARKING ONSITE BETWEEN THE HOURS OF 2AM - 10AM.
All buses / trucks / vans / sprinters / trailers must depart by 2AM.
WE ARE NOT ABLE TO BE FLEXIBLE ON THIS.**

Load-In:

Ground level rollup door (10.25' H x 10' W) located on the northwest corner of Junior Gilliam Way (Sometimes Jackson St. via Google Maps). 50' Push from Garage Door entrance up ramp to stage left.

Stage left ramp clearance is 40" wide and 8ft tall. Please let us know if you have anything that can't consolidate down to 8' tall and 40" wide.



Stage Entrance



Load In

Hotel Discounts:

A link to view our hotel rates and discounts can be found [here](#).

AUDIO

FOH - Venue Avid S6L-24c-112 System

Firmware 7.2.0

48 Analog In

8 Analog/8 AES Out @ FOH

8 Analog/8 AES Out @ Stage (Can be used for either console)

******Please advance any specific plugin needs outside of stock******

48 Channel Analog split with open 3rd leg for guest use

MONITORS - Venue Avid S6L-24c-112 System

Firmware 7.2.0

48 Analog In

16 Analog Out

16 AES Out

******Please advance any specific plugin needs outside of stock******

2 Guest Cat5e available to guest mix position and 2 to GA floor*

FOH DRIVE SYSTEM:

- (2) Lab Gruppen Digital Audio Matrix Processor
- (2) DnB Audiotechnik DS10 Audio Network Bridge
- (2) LAKE LM44 (Console Switching)

MAINS:

- (8) d&b V8 (4 per side flown)
- (8) d&b V12 (4 per side flown)
- (4) d&b VSubs (2 per side flown as part of the Main Left and Right)
- (2) d&b B22 Subs (1 per side ground stacked under stage)
- (4) d&b Y10p (Front Fill)
- (2) d&b Y10p (Mezzanine/VIP Fill)
- (4) d&b D80 amplifiers

MONITORS:

- (12) d&b M4 2 Way Wedges
- (1) d&b VSub (Drum Sub)
- (4) d&b V8 (2 Per Side Sidefills)
- (4) d&b VSub (2 Per Side Sidefills)
- (7) d&b D20 4ch Power Amplifiers

LIGHTING

FIXTURES:

- (19) Robe Robin Viva CMY LED Profile
- (8) Chauvet Maverick Force One Spot
- (18) Robe Robin LEDBeam 150
- (8) Robe Spikie
- (20) Chauvet COLORado M Solo
- (6) Chauvet Ovation E-910 FC 36 Degree
- (23) Chauvet Strike P38
- (6) Elation Protron 3K color strobe
- (1) Antari HZ500 Hazer

****NO OUTSIDE HAZERS unless otherwise advanced****

LIGHTING CONSOLE:

Grand MA3 Lite -

MA2 Software: 3.9.60.21

MA3 Software: 2.2.5.2

LIGHTING SYSTEM

Lighting Files Here:

[Brooklyn Bowl Nashville Lighting Files](#)

https://drive.google.com/drive/folders/1b6g2oG4Ma5_XFdHCfWVgill7GuQK-zq_

-Plot

-Patch Sheet

-GrandMA 2 + GrandMA 3 Show File for PSR

-Capture 2024 File

-Capture Presentation File - (.exe file. No need for capture key)

(2) CAT5e dry lines are available from FOH to USR.

(2) sACN lines are available USR.

(8) Universes of 5 Pin DMX available USR via sACN, Can be re-assigned to tour specs.

House sACN IP Ranges - Detailed to avoid IP Conflicts, Network is configured for Multicast sACN.

Node 1 - 192.168.0.211

Node 2 - 192.168.0.212

Node 3 - 192.168.0.213

Node 4 - 192.168.0.214 (Guest Stage Node)

Patch and Plot available at the Google Drive Link + end of the tech pack.

Video Systems & Gear

SWITCHER: Blackmagic Design ATEM Television Studio Pro HD Live Production Switcher (8 Channel SDI/HDMI Switcher)

CAMERAS: Sony BRC-H800 PTZ (x3 mounted House Center, Left, and Right) and Marshall CV503 Mini HD (x3 with mic stand adaptors for static stage shots)

CONTROLLERS: Sony RM-IP10 (x1 at FOH Video World)

RECORD DECKS: X1 Blackmagic Hyperdeck Studio 2 for line cut only.

****ISO Recording Decks available per additional cost****

RESOLUME COMPUTER: Dedicated graphics computer at FOH with Resolume available for use / additional cost per advance. **We do NOT have a video tech in house.

****PLEASE NOTE* - The end of each bowling lane contains a screen and projector (10 total) used for in-house IMAG of every show. We send the IMAG signal to the projector screens and x5 TV monitors around the venue. All shows are subject to recording for archival purposes.***

Recording / Video Capture / Livestream:

BB Nashville requests permission to record audio and video for archive purposes. Artists shall retain all ownership.

Any and all outside video capture, even for promo use, is subject to an origination fee and must advance permission with the production manager prior to load-in. Venue reserves the right to deny any video capture onsite if this is not advanced ahead of time.

The House reserves the right to give final approval on any and all camera placement(s).

Venue and Facilities

Stage Dimensions: 38ft x 21ft @ 48 inch deck height performance area

Wing Dimensions: 7ft x 21ft wings stage left and stage right.

Stage Trim Height: 19ft clearance from stage floor to bottom of truss.

House Risers: (6) 4ftx8ft wheeled risers w/1ft or 2ft legs.

House Truss Trims:

DS Arch Truss - 24'6" - Measured From GA Floor

Circle Truss - 24'6" - Measured from GA Floor

FOH Arch Truss - 24' - Measured from GA Floor

Backdrop/LED Wall Truss

34' wide truss. (4) 1 Ton Motors. Any rigging must be advanced.

Barricade: Mountain Stage Mojo type aluminum blow-through. 3ft from downstage edge.

Drape:

25' H x 38' W Upstage - ****Please Note - Our Upstage Drape is **Black Cherry******

23' H x 10' W **Black Cherry** Encore Curtains Stage Left & Stage Right 18' H x

38' Wide Upstage pipe available for backdrops

Guest Power:

200 amp, 3 phase Camlock service stage left for guest audio

400 amp, 3 phase Camlock service stage right for guest lighting / video

******feeder cable must match service******

Dressing Rooms + House Details

Green Room 1

- 10ft x 23ft with restroom and shower
- Live stream feed of show available upon request
- Lockable door
- Refrigerator
- Steamer and ironing board on request



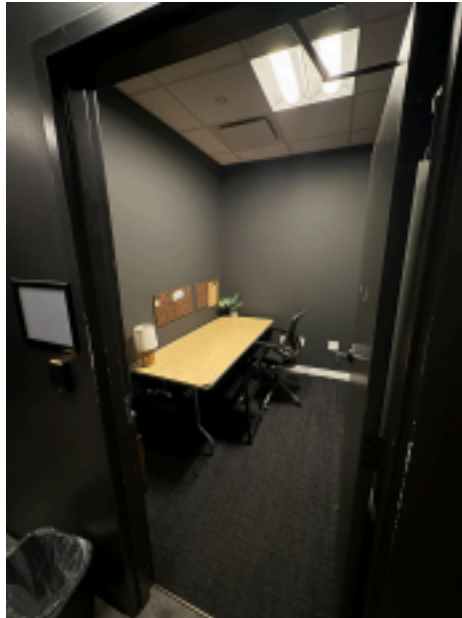
Green Room 2

- x1 - 10ft x 20ft with restroom and shower
- Live stream feed of show available upon request
- Lockable door
- Refrigerator
- Steamer and ironing board on request



Tour Production Office

x1 - 6ft x 8.5ft small touring office



WIFI:

Available throughout venue.

WIFI: LNvisitor/Password: livenation

Catering:

Dinner is provided from our in-house menu. For larger touring parties, a dinner buffet may be provided per advance. There is no dining room. Meals are served in the dressing room.

Hospitality:

Outside Hospitality / Rider Shop / Runner is per advance and subject to an additional show expense.

****Please Note - No Laundry service available onsite. Please advance any laundry needs with the Production Manager.*

Merchandise:

Merchandise is sold in the back of the house right GA floor. We can provide a merch-seller for you at an hourly fee PLUS TIPS as per advance. We are responsible for collecting Tennessee State sales tax of 9.75% on all merchandise sold. Grids, lights, and tables are provided. We retain 0% of your merch sales.

We have *extremely limited* backstage space for merch storage - please do not ship merch to the venue without advanced approval from the PM. We are not able to have merch boxes stay behind for pickup.



Security:

The venue issues a daily pass sheet for house security. Tour credentials may be honored per advance. We can supplement any tour credentials with a variety of house credential wristbands as needed (guest list AA, guest list VIP, etc).

A daily house security meeting takes place at 5:15pm, or per advance. There must be a representative from the tour present at the meeting. NO weapons permitted in the venue. All individuals will be wanded and bags are subject to search.

****ALL MEET & GREET/ PRE OR POST SHOW EVENTS ARE SUBJECT TO AN ADDITIONAL STAFFING FEE. ****

Settlement:

All settlement balances shall be paid by wire transfer. Checks may be requested 7 days out of show.

In-House Media:

Our house photographer is contracted to shoot every show, unless expressly instructed otherwise by an authorized artist representative.

House Backline

We do not have CDJ's, mixers, or wireless microphones in house. If you need these for your performance, they will have to be rented.

Please advance all production needs outside of this backline list with the PM at least 7 days in advance of your show date.

DRUMS

Pearl Master Series Maple (Midnight Blue)

Pearl Sensitone Steel Snare

24"x16" Kick Drum

12"x16" Rack Tom

16"x18" Floor Tom

Pearl Kick Pedal

Pearl Multi Stands (3)

Pearl Hi-hat Stand (1)

Pearl Optimount Tom Stand (1)

BASS AMP

Fender Rumble 800 Head

Fender Rumble 4x10" Cab

GUITAR AMPS

Fender ToneMaster Deluxe Reverb

<https://www.fender.com/en-US/guitar-amplifiers/contemporary-digital/tone-master-deluxe-reverb-blonde/2274100982.html>

Fender ToneMaster Twin Reverb

<https://www.fender.com/en-US/guitar-amplifiers/contemporary-digital/tone-master-twin-reverb-blonde/2274200982.html>

ADVANCE CONTACTS

Jeri Gennaro - Production Manager

jeri.gennaro@brooklynbowl.com

C. 917-748-6194

Korey Sugita - Production Coordinator

korey.sugita@brooklynbowl.com

C. 562.310.0960

Hospitality

nashartisthospo@brooklynbowl.com

Brooklyn Bowl Nashville
 UPDATED 5.21.2025 by BBNV House LD Emily Miller

Patch

Fixture Type	Fixture #	Uni	DMX	Range	Mode	Position	Color
Robe LED Beam 150	101	1	1	22	Mode 1	MS Truss	BLUE
Robe LED Beam 150	102	1	23	22	Mode 1	MS Truss	BLUE
Robe LED Beam 150	103	1	45	22	Mode 1	MS Truss	BLUE
Robe LED Beam 150	104	1	67	22	Mode 1	MS Truss	BLUE
Robe LED Beam 150	105	1	89	22	Mode 1	MS Truss	BLUE
Robe LED Beam 150	106	1	111	22	Mode 1	MS Truss	BLUE
Robe LED Beam 150	107	2	1	22	Mode 1	DS Truss	PURPLE
Robe LED Beam 150	108	2	23	22	Mode 1	DS Truss	PURPLE
Robe LED Beam 150	109	2	45	22	Mode 1	DS Truss	PURPLE
Robe LED Beam 150	110	2	67	22	Mode 1	DS Truss	PURPLE
Robe LED Beam 150	111	2	89	22	Mode 1	DS Truss	PURPLE
Robe LED Beam 150	112	2	111	22	Mode 1	DS Truss	PURPLE
Robe LED Beam 150	113	3	1	22	Mode 1	DS Arch Truss	RED
Robe LED Beam 150	114	3	23	22	Mode 1	DS Arch Truss	RED
Robe LED Beam 150	115	3	45	22	Mode 1	DS Arch Truss	RED
Robe LED Beam 150	116	4	1	22	Mode 1	DS Arch Truss	RED
Robe LED Beam 150	117	4	23	22	Mode 1	DS Arch Truss	RED
Robe LED Beam 150	118	4	45	22	Mode 1	DS Arch Truss	RED
Robe Viva CMY LED Profile	201	1	133	32	Mode 1	MS Truss	BLUE
Maverick Force 1 Spot	202	1	165	32	Mode 1	MS Truss	BLUE
Maverick Force 1 Spot	203	1	197	32	Mode 1	MS Truss	BLUE
Maverick Force 1 Spot	204	1	229	32	Mode 1	MS Truss	BLUE
Maverick Force 1 Spot	205	1	261	32	Mode 1	MS Truss	BLUE
Robe Viva CMY LED Profile	206	1	293	32	Mode 1	MS Truss	BLUE
Robe Viva CMY LED Profile	207	2	133	32	Mode 1	DS Truss	PURPLE
Maverick Force 1 Spot	208	2	165	32	Mode 1	DS Truss	PURPLE
Maverick Force 1 Spot	209	2	197	32	Mode 1	DS Truss	PURPLE
Maverick Force 1 Spot	210	2	229	32	Mode 1	DS Truss	PURPLE
Maverick Force 1 Spot	211	2	261	32	Mode 1	DS Truss	PURPLE
Robe Viva CMY LED Profile	212	2	293	32	Mode 1	DS Truss	PURPLE
Robe Viva CMY LED Profile	213	3	67	32	Mode 1	DS Arch Truss	RED
Robe Viva CMY LED Profile	214	3	99	32	Mode 1	DS Arch Truss	RED
Robe Viva CMY LED Profile	215	3	131	32	Mode 1	DS Arch Truss	RED
Robe Viva CMY LED Profile	216	3	163	32	Mode 1	DS Arch Truss	RED
Robe Viva CMY LED Profile	217	3	195	32	Mode 1	DS Arch Truss	RED
Robe Viva CMY LED Profile	218	4	67	32	Mode 1	DS Arch Truss	RED
Robe Viva CMY LED Profile	219	4	99	32	Mode 1	DS Arch Truss	RED
Robe Viva CMY LED Profile	220	4	131	32	Mode 1	DS Arch Truss	RED
Robe Viva CMY LED Profile	221	4	163	32	Mode 1	DS Arch Truss	RED
Robe Viva CMY LED Profile	222	5	1	32	Mode 1	FOH Arch Truss	YELLOW
Robe Viva CMY LED Profile	223	5	33	32	Mode 1	FOH Arch Truss	YELLOW
Robe Viva CMY LED Profile	225	5	97	32	Mode 1	FOH Arch Truss	YELLOW
Robe Viva CMY LED Profile	226	5	129	32	Mode 1	FOH Arch Truss	YELLOW
Robe Viva CMY LED Profile	227	5	161	32	Mode 1	Center Oval	ORANGE
Robe Viva CMY LED Profile	228	5	193	32	Mode 1	Center Oval	ORANGE
Robe Viva CMY LED Profile	229	5	225	32	Mode 1	Center Oval	ORANGE
Robe Viva CMY LED Profile	230	5	257	32	Mode 1	Center Oval	ORANGE
Robe Spikie	301	6	1	27	Mode 1	SR Balc	GREEN
Robe Spikie	302	6	28	27	Mode 1	SR Balc	GREEN
Robe Spikie	303	6	55	27	Mode 1	SR Balc	GREEN
Robe Spikie	304	6	82	27	Mode 1	SR Balc	GREEN

Brooklyn Bowl Nashville

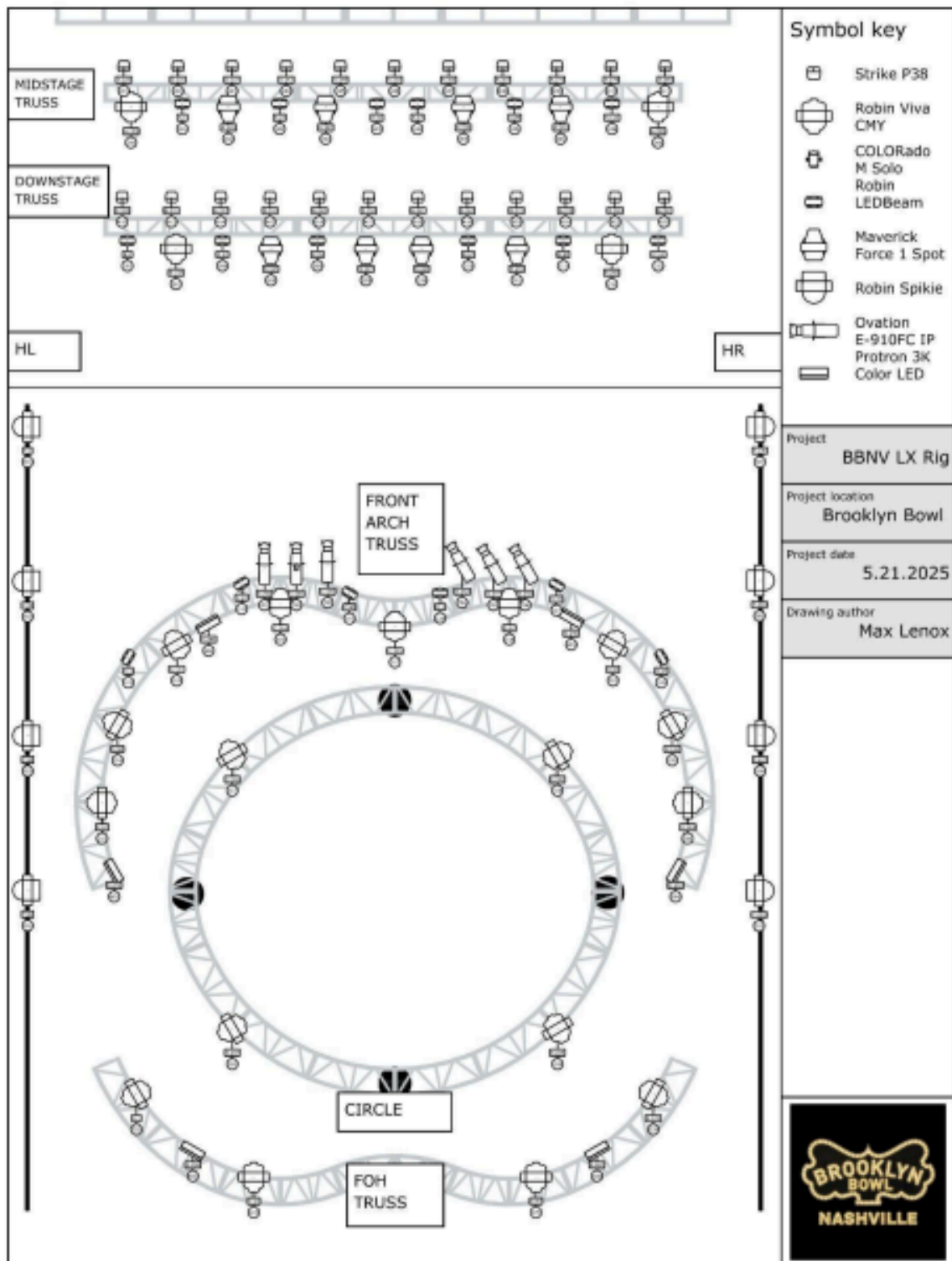
Patch

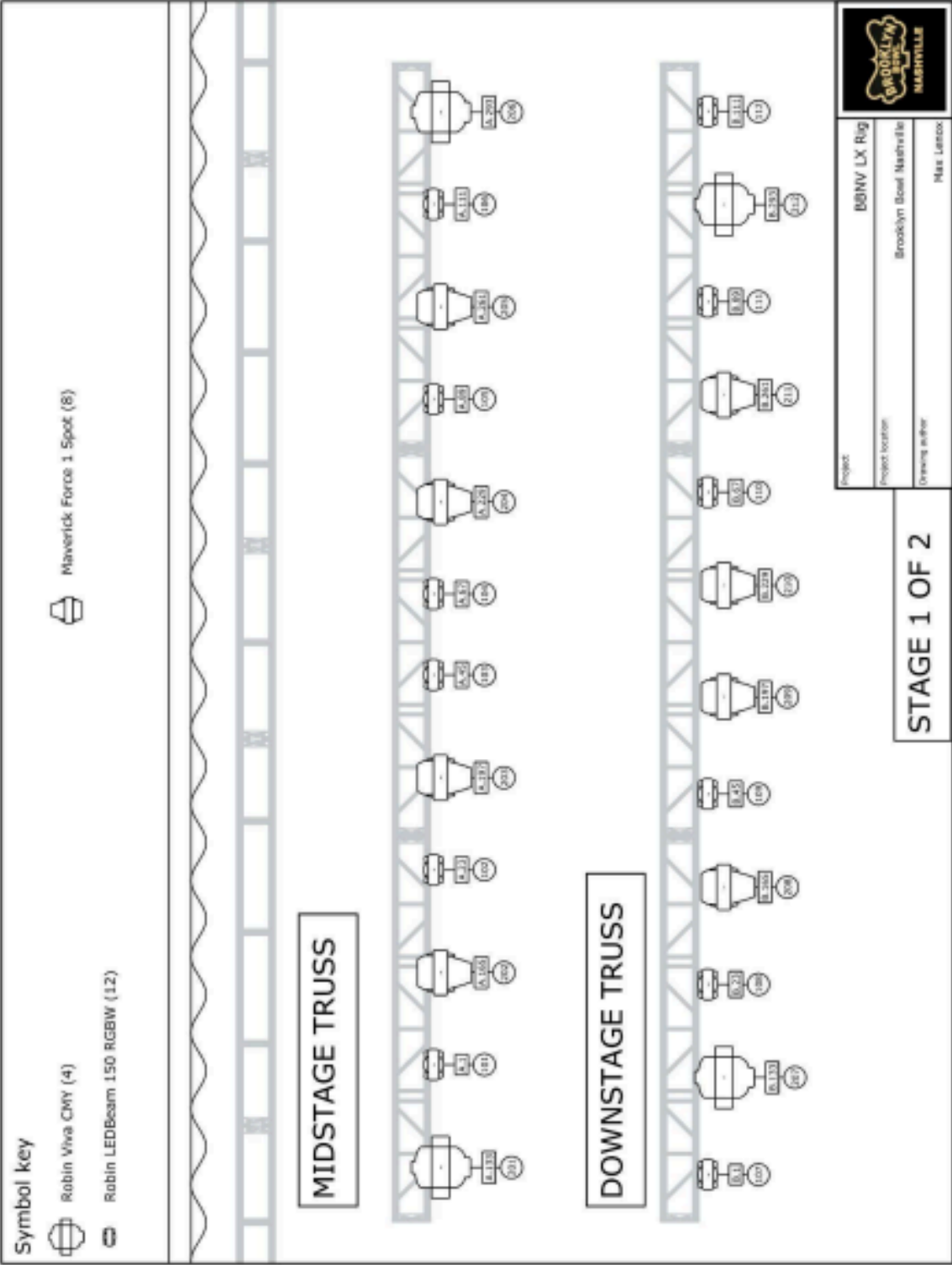
Robe Spikie	307	6	136	27	Mode 1	SL Balc	GREEN
Robe Spikie	308	6	190	27	Mode 1	SL Balc	GREEN
Robe Spikie	309	6	217	27	Mode 1	SL Balc	GREEN
Robe Spikie	310	6	244	27	Mode 1	SL Balc	GREEN
Chauvet Strike P38	401	1	325	6	6 channel	MS Truss	BLUE
Chauvet Strike P38	402	1	331	6	6 channel	MS Truss	BLUE
Chauvet Strike P38	403	1	337	6	6 channel	MS Truss	BLUE
Chauvet Strike P38	404	1	343	6	6 channel	MS Truss	BLUE
Chauvet Strike P38	405	1	349	6	6 channel	MS Truss	BLUE
Chauvet Strike P38	406	1	355	6	6 channel	MS Truss	BLUE
Chauvet Strike P38	407	1	361	6	6 channel	MS Truss	BLUE
Chauvet Strike P38	408	1	367	6	6 channel	MS Truss	BLUE
Chauvet Strike P38	409	1	373	6	6 channel	MS Truss	BLUE
Chauvet Strike P38	410	1	379	6	6 channel	MS Truss	BLUE
Chauvet Strike P38	411	1	385	6	6 channel	MS Truss	BLUE
Chauvet Strike P38	412	2	325	6	6 channel	DS Truss	PURPLE
Chauvet Strike P38	413	2	331	6	6 channel	DS Truss	PURPLE
Chauvet Strike P38	414	2	337	6	6 channel	DS Truss	PURPLE
Chauvet Strike P38	415	2	343	6	6 channel	DS Truss	PURPLE
Chauvet Strike P38	416	2	349	6	6 channel	DS Truss	PURPLE
Chauvet Strike P38	417	2	355	6	6 channel	DS Truss	PURPLE
Chauvet Strike P38	418	2	361	6	6 channel	DS Truss	PURPLE
Chauvet Strike P38	419	2	367	6	6 channel	DS Truss	PURPLE
Chauvet Strike P38	420	2	373	6	6 channel	DS Truss	PURPLE
Chauvet Strike P38	421	2	379	6	6 channel	DS Truss	PURPLE
Chauvet Strike P38	422	2	385	6	6 channel	DS Truss	PURPLE
Chauvet Strike P38	423	2	391	6	6 channel	DS Truss	PURPLE
Chauvet Colorado M Solo	501	1	391	17	STD.Y	MS Truss	BLUE
Chauvet Colorado M Solo	502	1	408	17	STD.Y	MS Truss	BLUE
Chauvet Colorado M Solo	503	2	397	17	STD.Y	DS Truss	PURPLE
Chauvet Colorado M Solo	504	2	414	17	STD.Y	DS Truss	PURPLE
Chauvet Colorado M Solo	505	3	227	17	STD.Y	DS Arch Truss	RED
Chauvet Colorado M Solo	506	3	244	17	STD.Y	DS Arch Truss	RED
Chauvet Colorado M Solo	507	3	261	17	STD.Y	DS Arch Truss	RED
Chauvet Colorado M Solo	508	4	195	17	STD.Y	DS Arch Truss	RED
Chauvet Colorado M Solo	509	4	212	17	STD.Y	DS Arch Truss	RED
Chauvet Colorado M Solo	510	4	229	17	STD.Y	DS Arch Truss	RED
Chauvet Colorado M Solo	511	5	289	17	STD.Y	FOH Arch Truss	YELLOW
Chauvet Colorado M Solo	512	5	306	17	STD.Y	FOH Arch Truss	YELLOW
Chauvet Colorado M Solo	513	5	323	17	STD.Y	FOH Arch Truss	YELLOW
Chauvet Colorado M Solo	514	5	340	17	STD.Y	FOH Arch Truss	YELLOW
Chauvet Colorado M Solo	515	5	357	17	STD.Y	Center Oval	ORANGE
Chauvet Colorado M Solo	516	5	374	17	STD.Y	Center Oval	ORANGE
Chauvet Colorado M Solo	517	5	391	17	STD.Y	Center Oval	ORANGE
Chauvet Colorado M Solo	518	5	408	17	STD.Y	Center Oval	ORANGE
Chauvet Colorado M Solo	519	5	425	17	STD.Y	Center Oval	ORANGE
Chauvet Colorado M Solo	520	5	442	17	STD.Y	Center Oval	ORANGE
Elation Protron 3K Color	601	3	278	8	8 channel	DS Arch Truss	RED
Elation Protron 3K Color	602	3	286	8	8 channel	DS Arch Truss	RED
Elation Protron 3K Color	603	4	246	8	8 channel	DS Arch Truss	RED
Elation Protron 3K Color	604	4	254	8	8 channel	DS Arch Truss	RED

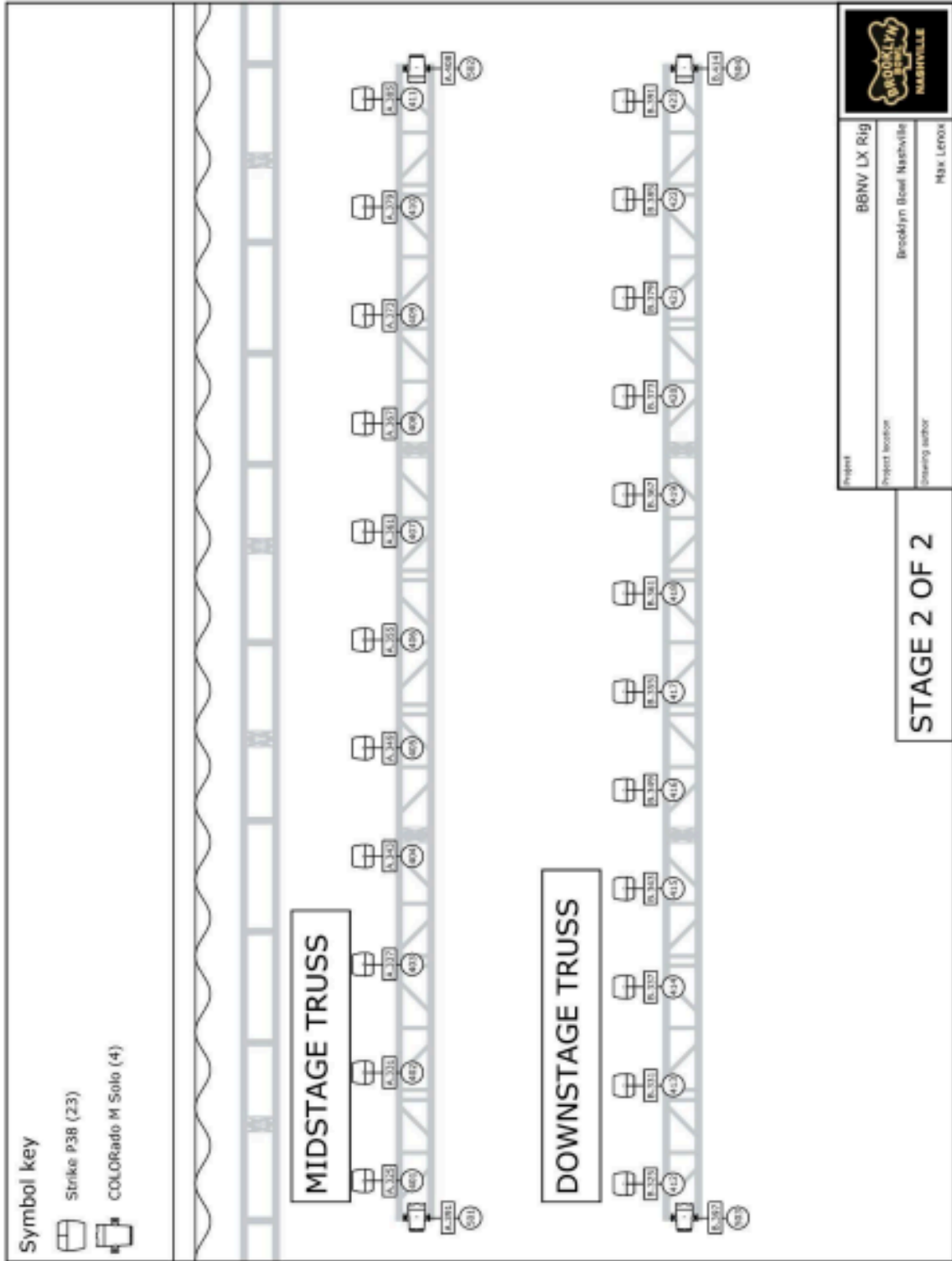
Brooklyn Bowl Nashville

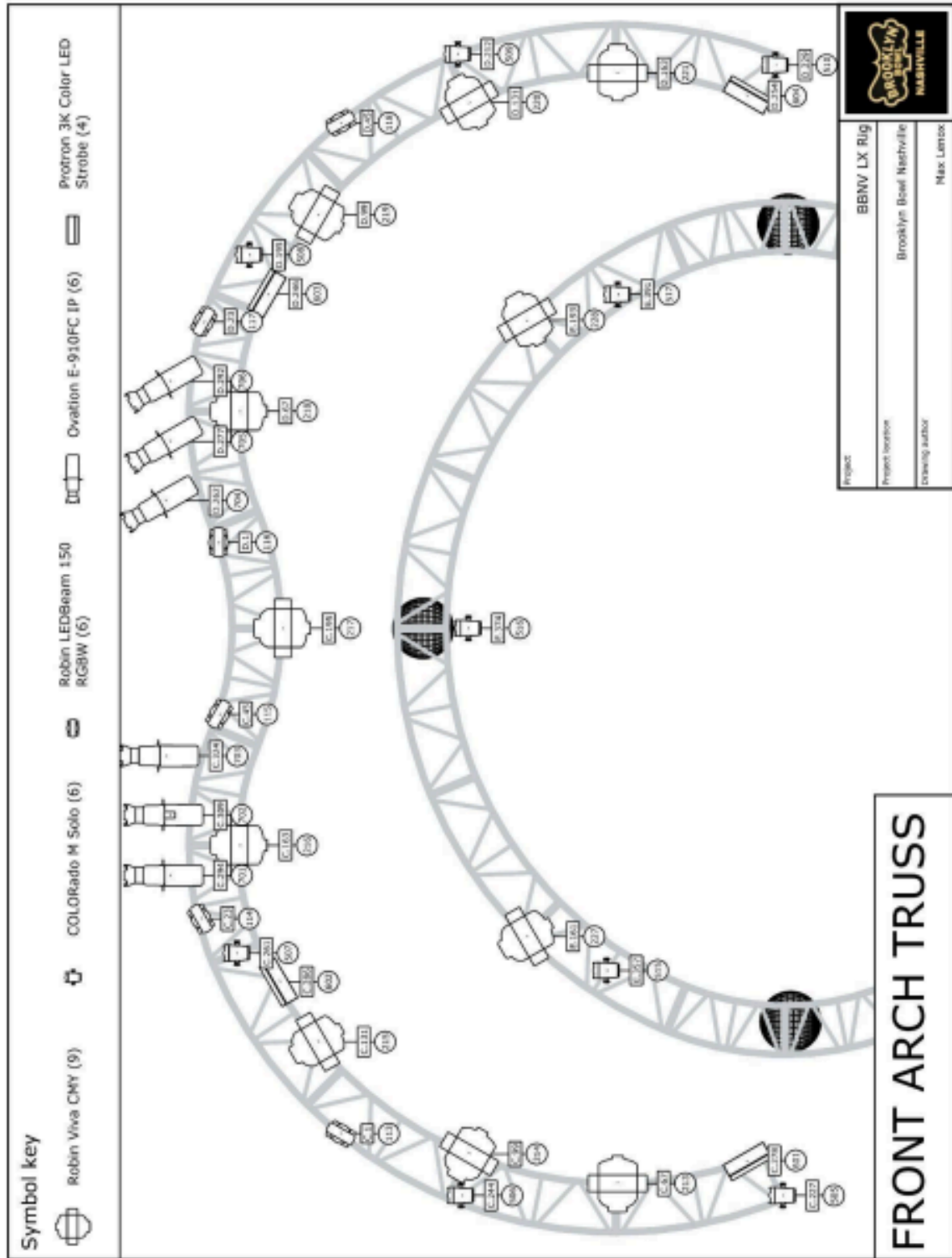
Patch

Elation Protron 3K Color	605	5	459	8	8 channel	FOH Arch Truss	YELLOW
Elation Protron 3K Color	606	5	467	8	8 channel	FOH Arch Truss	YELLOW
Chauvet E910 FC 36°	701	3	294	15	15	DS Arch Truss	RED
Chauvet E910 FC 36°	702	3	309	15	15	DS Arch Truss	RED
Chauvet E910 FC 36°	703	3	324	15	15	DS Arch Truss	RED
Chauvet E910 FC 36°	704	4	282	15	15	DS Arch Truss	RED
Chauvet E910 FC 36°	705	4	277	15	15	DS Arch Truss	RED
Chauvet E910 FC 36°	706	4	292	15	15	DS Arch Truss	RED
Antari HZ500 Hazer	901	8	1	1	1 channel	Stage	
ADJ MB DMX II Mirror Ball	8001	5	501	2	2 channel	Center Oval	ORANGE
ADJ MB DMX II Mirror Ball	8002	5	503	2	2 channel	Center Oval	ORANGE
ADJ MB DMX II Mirror Ball	8003	5	505	2	2 channel	Center Oval	ORANGE
ADJ MB DMX II Mirror Ball	8004	5	507	2	2 channel	Center Oval	ORANGE





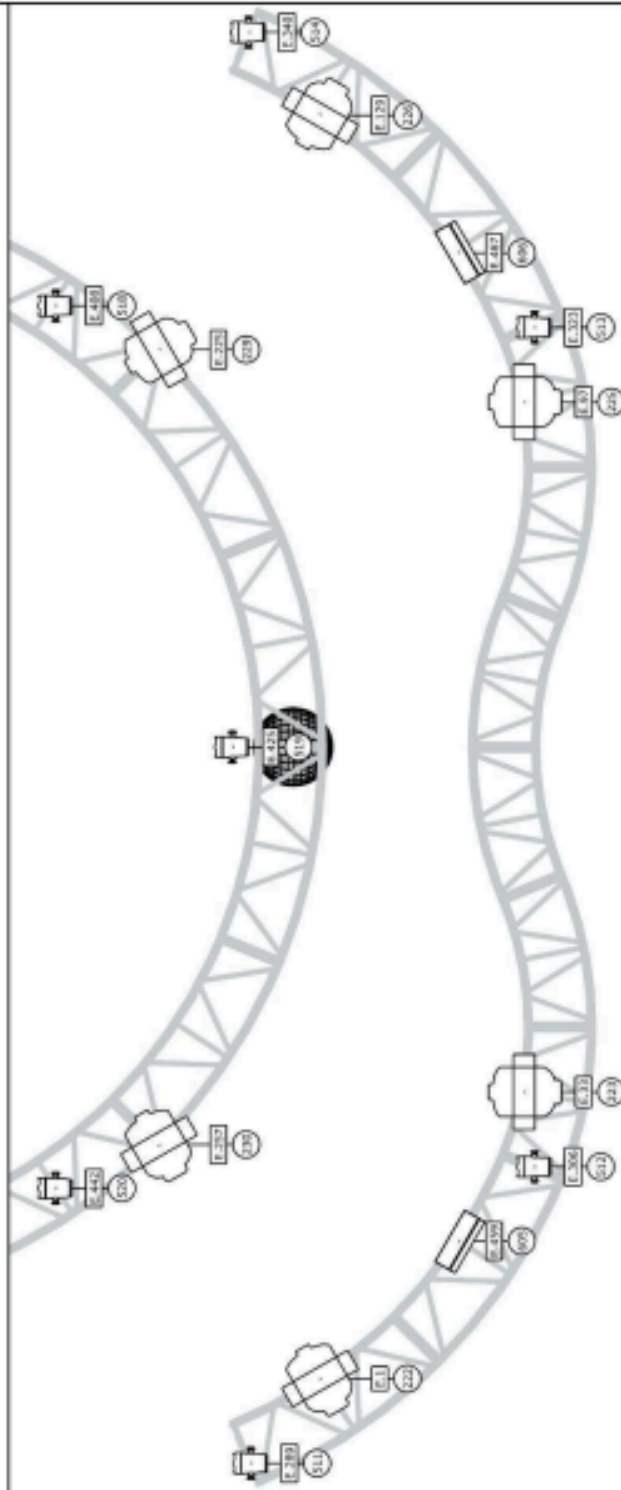




 Robin Viva CMY (4)

 COLORado M Solo (4)

COLORado M Solo (4)



Project	BBWV LX Rig
Project location	Brooklyn Bowl Nashville
Drawing author	Max Lenz

